A stylized Earth with a digital network overlay. The globe is shown in a perspective view, with continents and oceans visible. Overlaid on the globe is a complex network of glowing lines and nodes in various colors (blue, purple, orange, green), representing a global data network or infrastructure. The background is a dark, starry space with some faint grid lines.

Tasking to Exploitation, Condensing the Cycle

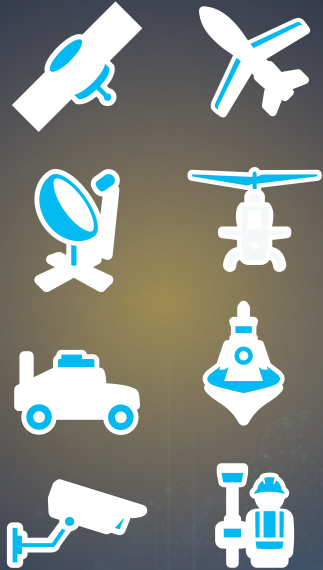
Royston Ong

7th June 2023

The GEOINT Process Flow

From Source to Processing, to Exploitation, & to Dissemination

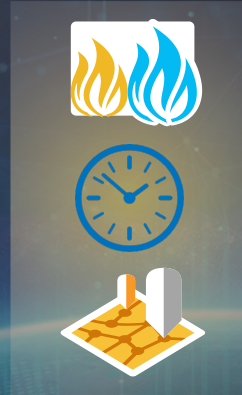
Source Data



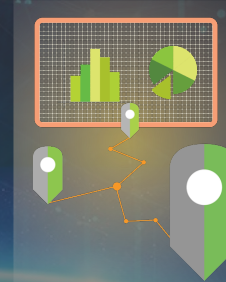
Ingest



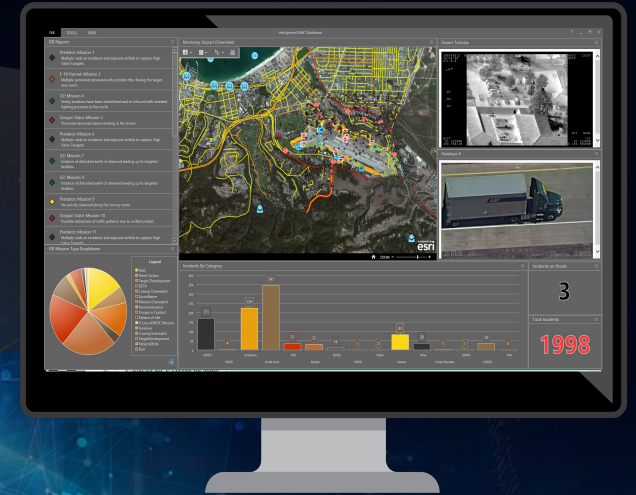
Normalize



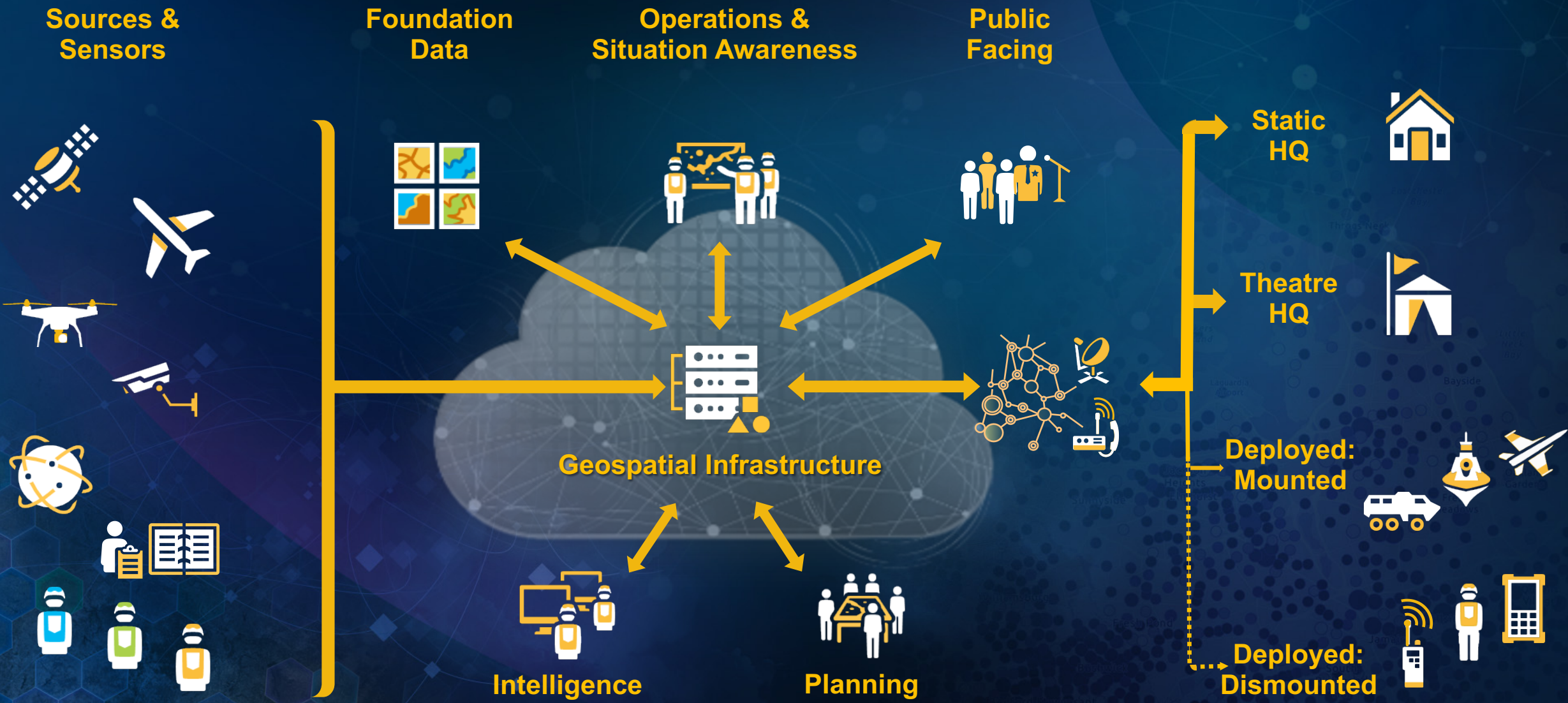
Analytics



All-Source Analysis



Geospatially Enabling the Defense Enterprise

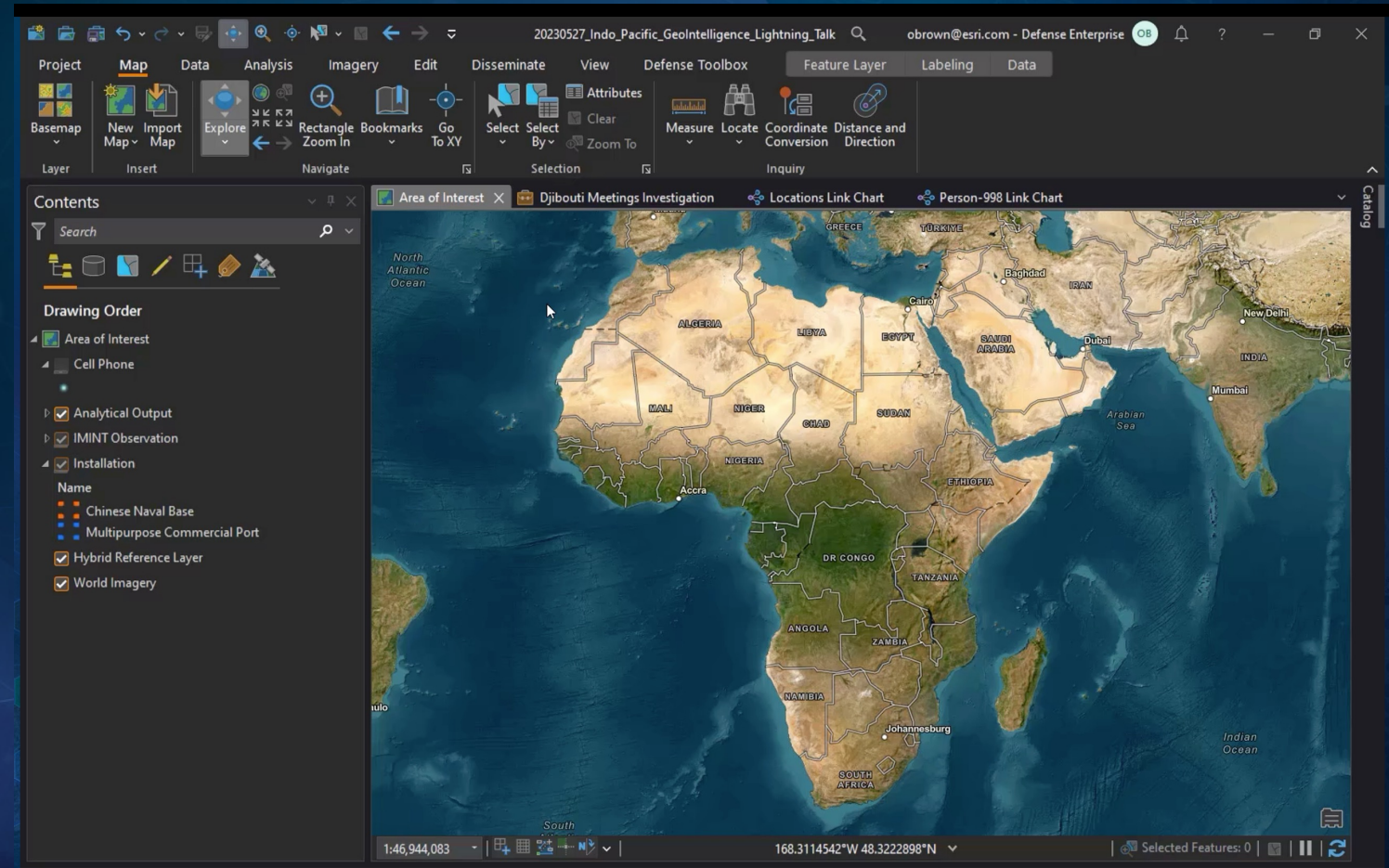


A System for Operations and Intelligence



Djibouti Scenario – Tasking to Exploitation

- AllSource analyst tasked to find any working relationship may form between two sites: Chinese Naval Base and Port Doraleh
- Start State: latest imagery on Area of Interest (Chinese Naval Base and the Commercial Port) supplied by IMINT, via the Integrated Geospatial Infrastructure
- AllSource analyst continues his investigation...



Project Map Data Analysis Imagery Edit Disseminate View Defense Toolbox Feature Layer Labeling Data

Basemap New Map Import Map Explore Rectangle Zoom In Bookmarks Go To XY Select Select By Clear Measure Locate Coordinate Conversion Distance and Direction

Layer Insert Navigate Selection Inquiry

Contents

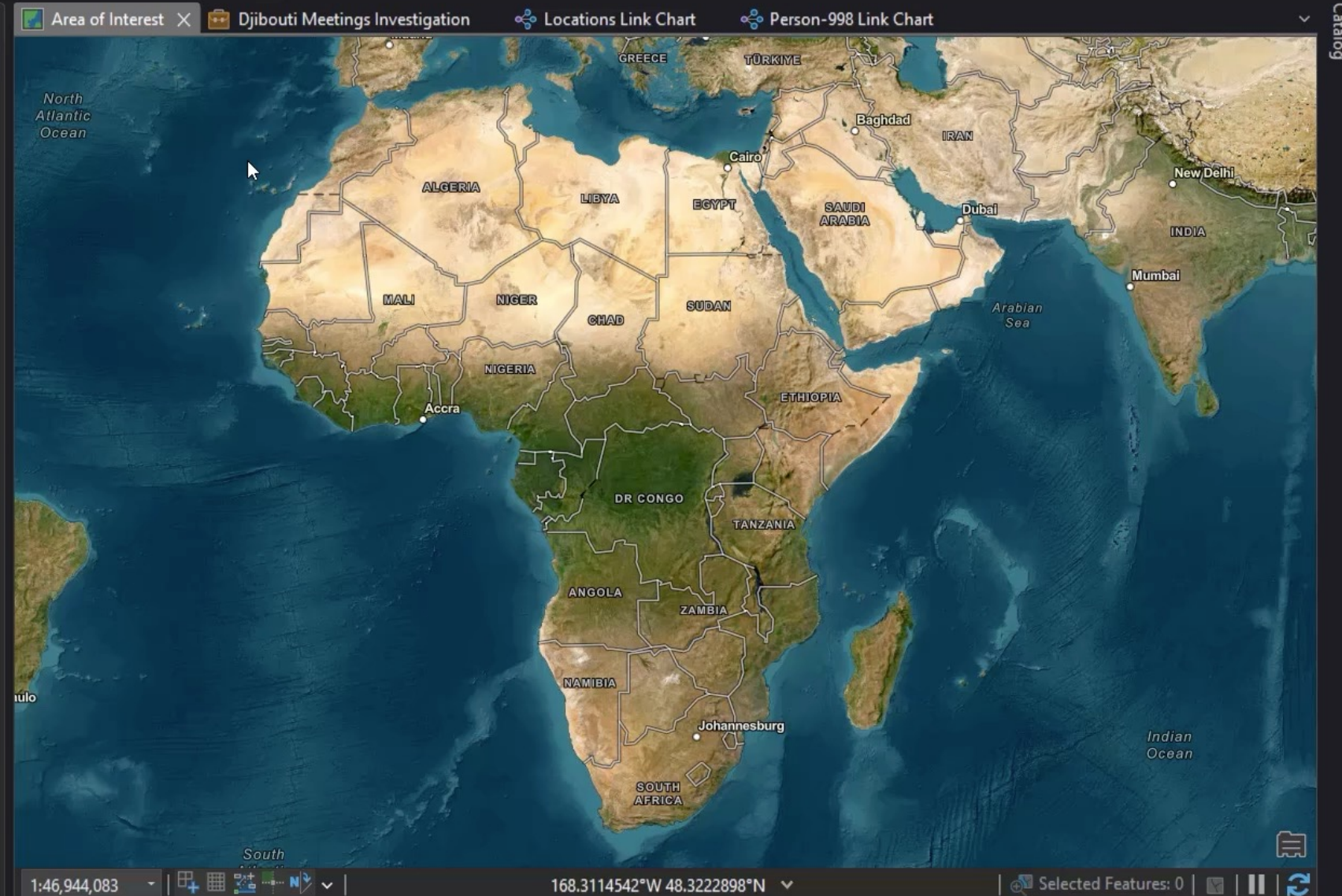
Search

Drawing Order

- Area of Interest
- Cell Phone
- Analytical Output
- IMINT Observation
- Installation

Name

- Chinese Naval Base
- Multipurpose Commercial Port
- Hybrid Reference Layer
- World Imagery



Conclusions

Tasking to Exploitation, Condensing the Cycle

- Integrated Geospatial Infrastructure as Enterprise Approach to connect foundation data and tasked satellite images
- Determine POI's movement activities and his relationships with other persons through unstructured and structured data for actionable intelligence with ArcGIS AllSource & ArcGIS Knowledge
- Orient clear decision points for decision-makers to task other assets for further surveillance





esri[®]

**THE
SCIENCE
OF
WHERE**[®]